

# AirCard® 580 Wireless WAN Modem for Sprint

## Installation Guide

2130533  
Rev 1.1



One Sprint. Many Solutions.™



## Important Notice

Due to the nature of wireless communications, transmission and reception of data can never be guaranteed. Data may be delayed, corrupted (i.e., have errors) or be totally lost. Although significant delays or losses of data are rare when wireless devices such as the Sierra Wireless modem are used in a normal manner with a well-constructed network, the Sierra Wireless modem should not be used in situations where failure to transmit or receive data could result in damage of any kind to the user or any other party, including but not limited to personal injury, death, or loss of property. Sierra Wireless accepts no responsibility for damages of any kind resulting from delays or errors in data transmitted or received using the Sierra Wireless modem, or for failure of the Sierra Wireless modem to transmit or receive such data.

The Sprint PCS Connection Card™ by Sierra Wireless (AirCard® 580) works on the Sprint Nationwide PCS Network. The AirCard 580 will offer broadband-like speeds when Sprint launches Sprint 1x-EVDO coverage in the future. Sprint does not warrant and makes no representations or claims that you will experience broadband-like data speeds or that you will experience continuous broadband-like data speeds, when Sprint 1x-EVDO coverage is made available. Wireless data usage, wireless data speed, and services used will vary widely depending on many factors, including service location.

## Safety and Hazards

Do not operate the Sierra Wireless modem in areas where blasting is in progress, where explosive atmospheres may be present, near medical equipment, near life support equipment, or any equipment which may be susceptible to any form of radio interference. In such areas, the Sierra Wireless modem **MUST BE POWERED OFF**. The Sierra Wireless modem can transmit signals that could interfere with this equipment.

Do not operate the Sierra Wireless modem in any aircraft, whether the aircraft is on the ground or in flight. In aircraft, the Sierra Wireless modem **MUST BE POWERED OFF**. When operating, the Sierra Wireless modem can transmit signals that could interfere with various onboard systems.

---

*Note: Some airlines may permit the use of cellular phones while the aircraft is on the ground and the door is open. The Sierra Wireless modem may be used at this time.*

---

The driver or operator of any vehicle should not operate the Sierra Wireless modem while in control of a vehicle. Doing so will detract from the driver or operator's control and operation

## Limitation of Liability

of that vehicle. In some states and provinces, operating such communications devices while in control of a vehicle is an offence.

The information in this manual is subject to change without notice and does not represent a commitment on the part of Sierra Wireless. SIERRA WIRELESS AND ITS AFFILIATES SPECIFICALLY DISCLAIM LIABILITY FOR ANY AND ALL DIRECT, INDIRECT, SPECIAL, GENERAL, INCIDENTAL, CONSEQUENTIAL, PUNITIVE OR EXEMPLARY DAMAGES INCLUDING, BUT NOT LIMITED TO, LOSS OF PROFITS OR REVENUE OR ANTICIPATED PROFITS OR REVENUE ARISING OUT OF THE USE OR INABILITY TO USE ANY SIERRA WIRELESS PRODUCT, EVEN IF SIERRA WIRELESS AND/OR ITS AFFILIATES HAS BEEN ADVISED OF THE POSSIBILITY OF SUCH DAMAGES OR THEY ARE FORESEEABLE OR FOR CLAIMS BY ANY THIRD PARTY.

Notwithstanding the foregoing, in no event shall Sierra Wireless and/or its affiliates aggregate liability arising under or in connection with the Sierra Wireless product, regardless of the number of events, occurrences, or claims giving rise to liability, be in excess of the price paid by the purchaser for the Sierra Wireless product.

## Patents

### QUALCOMM® 3G CDMA

Licensed by QUALCOMM Incorporated under one or more of the following United States patents and/or their counterparts in other nations:

4901307	5056109	5101501	5109390	5228054
5267261	5267262	5337338	5414796	5416797
5490165	5504773	5506865	5511073	5535239
5544196	5568483	5600754	5657420	5659569
5710784	5778338			

Manufactured or sold by Sierra Wireless Inc., its Affiliates, or its Licensees under one or more patents licensed from InterDigital Group.

©2005 Sierra Wireless. All rights reserved.

## Copyright

## Trademarks

AirCard and “Heart of the Wireless Machine” are registered trademarks of Sierra Wireless.

Sierra Wireless, the Sierra Wireless logo, the red wave design, the red-tipped antenna, and Watcher are trademarks of Sierra Wireless.

Windows® is a registered trademark of Microsoft Corporation.

Qualcomm® is a registered trademark of Qualcomm Incorporated.

## Comments

InstallShield® is a registered trademark and service mark of InstallShield Corporation.

Other trademarks are the property of the respective owners.

Sales Desk:	Phone:	1-604-232-1488
	Hours:	8:00 AM to 5:00 PM Pacific Time
	E-mail:	<a href="mailto:sales@sierrawireless.com">sales@sierrawireless.com</a>
Post:	Sierra Wireless 13811 Wireless Way Richmond, BC Canada V6V 3A4	
Fax:	1-604-231-1109	
Web:	<a href="http://www.sierrawireless.com">www.sierrawireless.com</a>	

Your comments and suggestions on improving this documentation are welcome and appreciated. Please e-mail your feedback, noting document 2130533 Rev 1.1, to [documentation@sierrawireless.com](mailto:documentation@sierrawireless.com). Thank you.

Consult our website for up-to-date product descriptions, documentation, application notes, [firmware](#) upgrades, troubleshooting tips, and press releases:

[www.sierrawireless.com](http://www.sierrawireless.com)



# >> Table of Contents

<b>Introducing the AirCard® 580 Wireless WAN Modem for Sprint . . . . .</b>	<b>7</b>
Welcome . . . . .	7
Feature summary . . . . .	7
Wireless WAN modem . . . . .	7
CDMA 3G services . . . . .	8
Additional AirCard features . . . . .	8
Package contents . . . . .	8
System components . . . . .	9
Your <a href="#">host</a> computing device . . . . .	9
The AirCard 580 wireless WAN modem . . . . .	9
The AirCard drivers and enabling software . . . . .	9
A CDMA service provider account . . . . .	10
The CDMA wireless network . . . . .	10
 <b>Getting Started . . . . .</b>	 <b>13</b>
The AirCard 580 software . . . . .	13
Account activation and configuration . . . . .	13
 <b>Installation . . . . .</b>	 <b>15</b>
System requirements . . . . .	15
AirCard software installation procedures . . . . .	16
Card insertion and removal . . . . .	18
Inserting the AirCard . . . . .	18
Removing the AirCard . . . . .	18
 <b>Activation . . . . .</b>	 <b>19</b>
Account configuration procedures . . . . .	19
Activation Wizard . . . . .	19
Manual activation . . . . .	19

**Care and Maintenance of Your AirCard .....21**

**Watcher Basics .....23**

    Starting and closing Watcher ..... 23

    Components of the Watcher window. .... 23

        Window controls ..... 24

        Docking ..... 25

        Always On Top ..... 25

    Interpreting icons ..... 25

        Connection Status Area ..... 25

        Call Status Area ..... 26

        Minimized Icons ..... 27

    Online Help ..... 27

    Troubleshooting ..... 27

**Technical Specifications .....29**

    LED operation ..... 29

    Radio frequency and electrical specifications ..... 30

    Environmental specifications ..... 30

**Glossary .....31**

**Index .....33**



# >> 1: Introducing the AirCard® 580 Wireless WAN Modem for Sprint

- [Welcome](#)
- [Feature summary](#)
- [Package contents](#)

---

*Note: Do not insert the AirCard into your PC Card slot prior to installing the software. It is important to install the software and driver in the correct order. For detailed procedures, see [page 15](#).*

---

---

*Note: For step-by-step instructions to access features of the AirCard, consult the [online help](#) available with Watcher.*

---

## Welcome

The Sierra Wireless AirCard 580 wireless WAN modem is a dual-band wireless PC Card for cellular and North American PCS networks. It enhances the functionality of your mobile computing devices by adding wireless data and 2-way messaging.

This card allows you to do the following (subject to feature availability), without using a wireline phone or network:

- Connect to the Internet, [VPN](#) and corporate networks
- Send and receive e-mail

## Feature summary

The AirCard is designed to provide a wide range of capabilities using [CDMA](#) network technology. Implementation of these features will depend on the account features you have chosen.

Some features described in this manual may not be available with your network account. For details of the services and accounts available, contact Sprint.

## Wireless WAN modem

Once installed and configured, the AirCard can connect to the [CDMA](#) network automatically. You just insert the AirCard, allow Watcher to autolaunch and authenticate your account on the network, then launch your Internet browser—you're online!

## CDMA 3G services

The AirCard operates over a type of wireless network called [CDMA](#) (Code Division Multiple Access).

CDMA 3G technology provides a variety of connectivity features, depending on your Sprint account:

- [1x-EVDO](#) — (where available; see [“Important Notice”](#) on page 1) a high-speed standard for cellular packet data communications. Supports Internet connections with broadband-like speeds. Actual speed depends on the network conditions.
- [1X](#) — a high-speed standard for cellular packet data communications. Actual speed depends on the network conditions.

Once the connection is established, you can open your browser and connect to any web site that is accessible through the Internet, or access other Internet services (such as e-mail).

The connection is “active” when data transmission is occurring. If data transmission stops for a period of time (determined by the network), the connection becomes “dormant”; see [page 26](#).

## Additional AirCard features

Beyond the features of the [CDMA](#) network, the AirCard provides additional software features:

- PIN security code to protect your AirCard and account from unauthorized use.
- An Activation Wizard ([page 19](#)) to assist with configuring your CDMA account.
- A Call Log to track outgoing calls and determine the amount of data transferred.

## Package contents

Your AirCard package contains the following components:

- AirCard 580 wireless WAN modem with antenna
- Installation CD containing the AirCard software and this installation and troubleshooting guide
- Quick Start Guide
- Warranty Card

## System components

Your AirCard 580 wireless WAN modem is just one part of a system designed to provide you with a wide range of communication features. Every component of the system is needed to enable these capabilities.

### Your host computing device

Your notebook hosts the AirCard hardware and runs the communication software: your web browser and e-mail application, and Watcher—the AirCard enabling software.

You may also have other software on your computer that can be used wirelessly with the AirCard, such as: file transfer applications (FTP), chat or instant messaging, a [VPN](#) (Virtual Private Network) client, client software for a corporate server application.

### The AirCard 580 wireless WAN modem

Along with the antenna, this equips your computer with a radio modem.

The AirCard fits into a standard Type II PC Card slot available on most notebook PCs.

Every [CDMA](#) network operates on one of three radio frequency bands. As a dual-band product, the AirCard operates on two of these bands (see [page 30](#)), providing a wide coverage area.

### The AirCard drivers and enabling software

Required to control, monitor, and manage your wireless connections, this includes the Sierra Wireless Watcher™ application, and the Network Adapter Manager for selecting your network connection card. The device drivers are the software that enables the AirCard to work with your computer's operating system.

The AirCard comes with a CD containing this software:

- Watcher application that you use to manage the AirCard and monitor your connections. Use the application's [online help](#) for step-by-step instructions to access features of Watcher.
- Network Adapter Manager application that allows you to switch between the AirCard and network cards. This

---

*Note: You can use the Lock Code feature to prevent others from using your account should your AirCard be stolen. For information on this feature, see the [online help](#).*

---

---

*Note: More information about [CDMA](#) networks is available on the CDMA Development Group web site, [www.cdg.org](http://www.cdg.org).*

---

---

*Note: Most service providers have coverage maps on their web sites.*

---

application also handles the autolaunch of Watcher when you insert the AirCard.

- The device driver software that provides the interface between the AirCard and your Windows® operating system.

The driver and application software *must* be installed before you insert the AirCard for the first time. Detailed instructions are provided in the following chapters.

## A CDMA service provider account

Companies that operate [CDMA](#) networks and provide access to these networks are called *service providers*. You must have an account with Sprint to use the AirCard.

Each service provider has its own pricing options. There may be flat rate accounts, which provide you a maximum number of minutes of network usage for a fixed monthly fee. There may be accounts for which you are charged for network usage by the minute or by the amount of data transmitted.

Your account may include a variety of other services.

Each AirCard has been provisioned at the factory for use with a particular service provider (Sprint). This sets the AirCard to use particular radio channels and enables services specific for that provider.

The process of setting up your account is called *activation*. Activation involves action by Sprint and configuration of the AirCard.

The procedure to configure (activate) your AirCard is covered in "[Activation](#)" on page 19.

## The CDMA wireless network

This is the worldwide infrastructure providing the radio coverage that allows you to stay connected. Made up of radio towers, and a variety of network switches, routers, and servers, the network is an interconnection of many service provider companies.

There are [CDMA](#) networks that operate in the frequency bands supported by the AirCard throughout North America and parts of Latin America, Asia, New Zealand, and Australia. However, each service provider operates a network that covers a limited geographical area within the overall CDMA coverage area.

*Note: The fee for service is usually higher when you are roaming (connecting to a network other than Sprint's). The Call Guard feature (subject to feature availability) can warn you before making or answering calls while roaming.*

Most service providers have “[roaming](#)” agreements with other service providers, so that they can offer service outside of the coverage area of their own networks. For example, assuming you live in Vancouver and travel frequently to Seattle, you can obtain an account with a Vancouver service provider that has a roaming agreement with a service provider in Seattle. You would then have local service in Vancouver, and roaming service in Seattle. (Most service providers charge more for roaming service than local service.)



## >> 2: Getting Started

- The AirCard 580 software
- Account activation and configuration

Before you can begin using the AirCard, you must:

1. Install the AirCard enabling software and driver.
2. Activate an account and configure the AirCard to use your account (unless the AirCard has been pre-activated).

This section provides an overview of this process.

### The AirCard 580 software

The AirCard comes with this software:

- Watcher™ application that you use to manage the AirCard and monitor your connections
- Network Adapter Manager application that allows you to switch between the AirCard and network cards
- The driver software that provides the interface between the AirCard and your Windows operating system

The Watcher software (and the Network Adapter Manager) should be installed before you insert the AirCard for the first time. Detailed instructions are provided in “[Installation](#)” on page 15.

### Account activation and configuration

You must have an account with Sprint to use the AirCard. The process of setting up an account is called *activation*.

If you purchased the AirCard directly from Sprint, you may already have an account; your AirCard may be pre-activated.

Otherwise, run Watcher and the Activation Wizard, which guides you through the activation and configuration process. (Depending on your configuration, Watcher and the Activation Wizard may start automatically.)

Configuring the AirCard involves setting the phone number assigned by Sprint and may involve entering other network parameters and settings.

Sprint needs to know:

- The billing information to use to collect payment for your network usage.
- The ESN (Electronic Serial Number) assigned to your modem during the manufacturing process. (The ESN is printed on a label on the AirCard and can be displayed in Watcher.) This number is used to help authenticate your account when you connect for service.

You require from Sprint:

- An activation code that gives you access to configure the account.
- A phone number and MSID for your AirCard.



## >> 3: Installation

- [System requirements](#)
- [Installation](#)
- [Inserting the AirCard](#)
- [Removing the AirCard](#)

This chapter guides you through the steps necessary to install the AirCard on a notebook PC.

---

*Note: Do not insert the AirCard into your PC Card slot before installing the software.*

---

The basic steps are:

1. Insert the AirCard 580 installation CD into your CD-ROM drive and install Watcher and the Network Adapter Manager.
2. Insert the AirCard into the PC Card slot (refer to [page 18](#)) to install the AirCard drivers.
3. If the AirCard has not been pre-activated, use the Activation Wizard to configure the AirCard (as described in "[Activation](#)" on page 19).

Before you begin the installation process, ensure your PC is running a supported operating system and meets the hardware requirements described below.

### System requirements

The AirCard is supported on notebook PCs running:

- Windows 98 SE
- Windows Me
- Windows 2000 with Service Pack 1 or later (Service Pack 4 is recommended)
- Windows XP (Home and Professional versions)

---

*Note: A driver is software that provides the interface between a device (such as the AirCard) and the operating system on your PC (such as Windows 98).*

---

---

*Note: Users of Windows 2000 must be logged in with administrative privileges to install the AirCard software. Users of Windows XP may require administrative privileges, depending on the XP installation.*

---

To install the AirCard, you require these system resources:

**Table 3-1: System Resource Requirements**

Card Slots	1 Type II <a href="#">PCMCIA</a> (PC Card) Slot
Communications Ports	1 Available
Disk Drive	CD-ROM (for installation only)
I/O Resources	1 IRQ, 40 bytes I/O Space
Memory	10 MB
Disk Space	2 MB

## AirCard software installation procedures

To install Watcher, the Network Adapter Manager, and the AirCard driver:

1. If the installation CD is not already in your CD-ROM drive, insert it. The CD should autostart and display a menu.  
If the CD does not autostart, select **Start > Run** and enter **d:\launch.exe** where **d** is the drive letter of your CD-ROM drive.
2. From the CD startup window, select **notebook installation and documentation** and then **notebook software installation** to launch the InstallShield® Wizard.
3. If the Open With... window appears, cancel the installation (your computer is missing some files required for the installation). Search for **Instmsia.exe** (if you're running Windows 98 or Me) or **Instmsiw.exe** (if you're running Windows 2000) among the downloads at [www.microsoft.com](http://www.microsoft.com). Install the file on your computer, then rerun the AirCard software installation.
4. Use the **Next** and **Back** buttons to navigate through the wizard noting the following:
  - To proceed with the installation, you must click **Yes** to indicate your acceptance of the terms of the license agreement.

---

*Note: Do not forcefully insert the AirCard. This may damage connector pins. For instructions on removing the AirCard, see [page 18](#).*

---

- Use the default settings for the Destination Location and Program Folder unless you have special requirements and an advanced understanding of PC configuration. (The Destination Location dictates where the software is installed. The Program Folder dictates the name assigned to the software in Add/Remove Programs in the Control Panel.)
  - Click **Finish** to close the last screen of the wizard.
5. If you are running Windows XP, a window indicates that the driver files will be copied to your notebook. Click **OK** and click **Continue Anyway** on the Software Installation window if it appears. The window may appear more than once; the AirCard is a multifunction card.
  6. Click **OK** when you are prompted to insert the AirCard. Insert the AirCard into your PC Card slot (refer to [page 18](#)).

---

*Note: For Windows 98 and Me users: If your computer has a built-in network adapter, your computer may appear to have stopped responding during the card detection process. The operating system is resolving resource issues related to your built-in adapter and the AirCard. **Do not abort the installation process.** Allow several minutes for the process to complete.*

---

7. Click **OK** when you are notified that the installation is complete.
8. If your operating system is Windows 98 or Me, restart your PC from the **Start** menu.

---

*Note: Windows 98 and Me users: If your computer has a built-in network adapter, another long delay occurs the first time the AirCard is inserted after this restart. Subsequent insertions of the card will not experience this delay.*

---

On completion of this step, Watcher, the Network Adapter Manager, and the AirCard driver are installed.

## Card insertion and removal

### Inserting the AirCard

**To insert the AirCard into a notebook:**

1. With the picture label facing up, insert the AirCard into the slot.

When you insert the AirCard, the following should occur:

- If sound effects are enabled, the PC beeps.
- The PC Card icon appears in the [system tray](#), if it is not already displayed for another card, (and unless the feature has been disabled).
- Watcher launches (unless the autolaunch feature has been disabled).

The AirCard is powered as soon as you insert it.

### Removing the AirCard

To remove the AirCard:

1. Close Watcher if it is open.
2. Click the PC Card icon in the [system tray](#) to display the option to stop the card.
3. Click:  
Windows XP: "Safely remove Lucent USB OpenHost Controller"  
Windows 98 or Me: "Stop Wireless PC Card USB Open Host Controller"  
Windows 2000: "Stop Standard OpenHCD USB Host Controller".
4. If a dialog box appears notifying you that it is safe to remove the card, click **OK**.
5. Use the ejector to remove the AirCard from the slot. Do not pull the AirCard out by the antenna.

## >> 4: Activation

- Account configuration procedures
- Manual activation

### Account configuration procedures

The final step to making the AirCard operational is configuring it to use your Sprint [CDMA](#) account. The process of activation configures your AirCard with the required account parameters (phone number, etc.).

If you purchased a pre-activated AirCard, this step is not necessary. Once the application software and driver are installed, the AirCard is ready for use.

Otherwise, you must use the Activation Wizard to activate and configure your account.

### Activation Wizard

The Activation Wizard walks you through the process of configuring an account.

This section is a guide only. Consult the Quick Start Guide, and follow the directions on screen and instructions given by your Sprint representative.

**To activate an account and configure your AirCard for use:**

If your AirCard does not have an activated account, and Watcher has started automatically, then the Activation Wizard should start automatically. If this does not happen:

1. Ensure Watcher is running. If it is not, select **Start > Programs > Sierra Wireless > AirCard 580 > AirCard 580 Watcher for Sprint**.
2. Start the Activation Wizard: select **TOOLS > Activation Wizard**.

To begin activation of the AirCard, click **Next**.

### Manual activation

Activation involves phoning Sprint, exchanging information, and entering your account information into the appropriate fields in the wizard. (To use this method, you require a phone.)

Follow the information in the Quick Start Guide (section “Activating the AirCard 580”). Information is also provided in the online Help, from the Activation Wizard screens.

Inform Sprint’s representative that you are activating your Sierra Wireless AirCard 580 for Sprint.

On completion of the Activation Wizard, the AirCard is ready for use.



## 5: Care and Maintenance of Your AirCard

5

As with any electronic device, the AirCard must be handled with care to ensure reliable operation. Follow these guidelines in using and storing the AirCard:

- Do not apply adhesive labels to the AirCard. This may cause the AirCard to become jammed inside the card slot.
- Optimal signal strength is usually obtained when the antenna is perpendicular to the modem. The antenna should bend easily at the hinge. Do not forcefully bend the antenna.
- The AirCard should fit easily into your PC Card slot. Forcing the AirCard into a slot may damage connector pins.
- Protect the card from liquids, dust, and excessive heat.
- When not installed in your computer, store the AirCard in a safe place.





## >> 6: Watcher Basics

## 6

Watcher is the application that allows you to manage and monitor the connection between the AirCard and the network.

You use Watcher to:

- Determine your signal strength, [roaming](#) status, 3G high-speed data availability, and other network connection parameters
- Initiate data calls
- View call statistics
- Customize features and options

Anytime you use the AirCard you must run Watcher. Once you make a connection in Watcher, you can launch whatever application you want to use (such as your web browser or e-mail application).

### Starting and closing Watcher

Depending on your settings in the Options window, Watcher launches automatically anytime you insert the AirCard. You can also launch Watcher by:

-  Double-clicking the Watcher icon on your desktop
- Selecting **Start > Programs > Sierra Wireless > AirCard 580 > AirCard 580 Watcher for Sprint**

The standard Windows control buttons in the upper right corner of the window are used to minimize or close Watcher. When minimized, Watcher does not appear as a taskbar button. Instead, an icon is shown in the [system tray](#), usually at the right end of the taskbar. (See "[Minimized Icons](#)" on page 27.)

### Components of the Watcher window

The window has two areas that display messages and icons: the Connection Status Area, and Call Status Area.

A menu bar is located on the upper left side of the window.

Windows control buttons are in the top right corner.

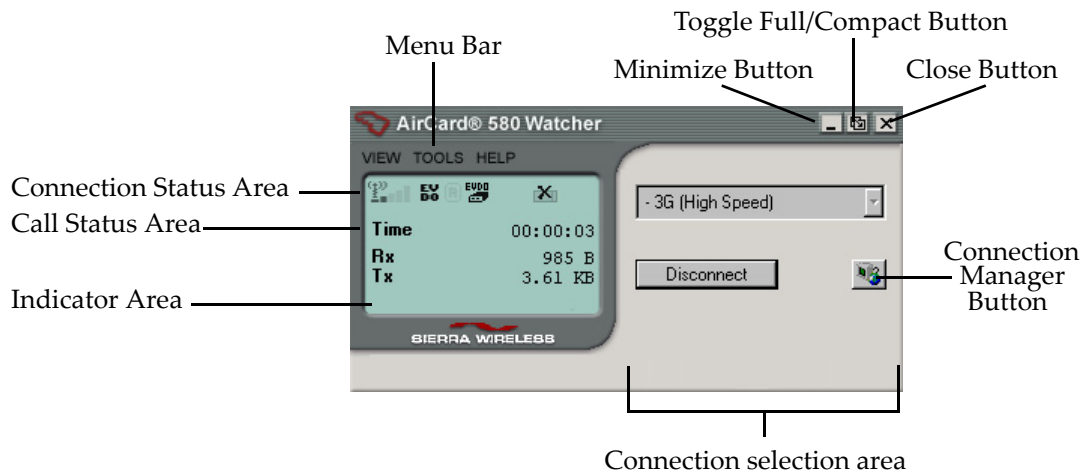



Figure 6-1: Main Watcher window

For a detailed description of each option in the menus, see the [online help](#).

## Window controls

- The **Minimize** button closes the Watcher window but leaves the application running. When Watcher is minimized, the Watcher icon in the [system tray](#) can be used to determine the AirCard status. (See [page 27](#).) This icon replaces a taskbar button for Watcher.

Once minimized, you can redisplay the Watcher window by selecting the Watcher icon in the system tray. You can also restore the window by double-clicking the desktop shortcut or launching Watcher from the Start menu.

- The **Toggle Full/Compact** button  is used to switch between the full Watcher window and the compact view:



The compact view allows you to see connection status and indicators while using less space on the desktop.

To make data connections, disconnect, or access Watcher features, you must use full view. To return to full view, select the view toggle button in the top right.

- The **Close** button is used to exit Watcher.

## Docking

You can set the Watcher window to “jump” to the edge of your screen when you move the window close to an edge. This lets you easily position Watcher in a corner of the screen.

- Select **VIEW > Docking**

## Always On Top

You can set Watcher to always display in front of other windows. This allows you to monitor connection status while using another maximized application, such as your web browser.

- Select **VIEW > Always On Top**

## Interpreting icons

Watcher makes extensive use of icons to indicate status and events. The various icons are described in the following sections on the display areas of Watcher.

### Connection Status Area









The Connection Status Area uses the icons shown below.

*Note: Optimal signal strength is obtained when the antenna is perpendicular to the AirCard.*

**Table 6-1: Connection Status Area icons**

Icon	Meaning
	AirCard not detected.
	The Signal Strength indicator uses bars to show the intensity of the radio signal. The number of bars increases as signal strength increases to a maximum of five bars.
	When the bars are dimmed and the antenna icon is crossed out, no connection is possible for one of these reasons: <ul style="list-style-type: none"> <li>• No antenna is attached</li> <li>• You are outside the <a href="#">CDMA</a> network coverage area</li> <li>• The signal strength is too weak</li> <li>• A network or account problem is preventing the AirCard from obtaining service</li> </ul>
	<a href="#">1x-EVDO</a> is available in this area (where supported; see “ <a href="#">Important Notice</a> ” on page 1).

**Table 6-1: Connection Status Area icons (cont.)**

Icon	Meaning
	1X is available in this area. (Not displayed if 1x-EVDO is available).
	<p>The Roaming Status indicator shows whether you are <b>roaming</b> onto a network other than Sprint's.</p> <p>When the indicator is off (gray), you are within the local coverage area of Sprint. When the indicator is on (solid black), you are in a "preferred" roaming area. When the indicator is blinking, you are within the coverage area of a <b>CDMA</b> network but not in a "preferred" roaming area.</p> <p>Your coverage area and account charges depend upon the type of account you have. There may be surcharges for roaming service, which vary based on whether you are in a preferred or non-preferred roaming area. If there is no roaming agreement between Sprint and the local carrier, you may be unable to complete calls.</p>
The In Use indicator shows whether a call is in progress. No icon is displayed when the AirCard is idle. Otherwise, one of these icons is displayed:	
	A high-speed (1x-EVDO) <b>packet</b> data call (where available; see "Important Notice" on page 1) is in progress.
	A high-speed (1X) packet data call is in progress.
	<p>A high-speed (1x-EVDO or 1X) packet data connection (where available; see "Important Notice" on page 1) is <b>dormant</b>. You can resume data transmission without having to re-establish the connection.</p> <p><b>Note:</b> Some applications may not be able to function on a dormant connection.</p>
	A fatal error has occurred and the AirCard is inoperable. Close Watcher and restart your PC.

## Call Status Area

The Call Status Area displays messages related to the status or progress of a connection.

Where a duration timer is shown, timing begins when the call is initiated—not from the time the call is fully connected. This is a measure of the time the AirCard has been using the radio channel (a wireless network resource).

"Click this display to exit PowerSave mode" indicates that the AirCard could not find a system within a 15 minute interval. To conserve power, the AirCard reduces channel scanning to once every three minutes. To force the AirCard out of PowerSave mode, click in the Call Status Area. The AirCard performs a channel scan and, if no network is detected, returns to PowerSave mode.

## Minimized Icons

Watcher displays an icon in the Windows system tray (which is usually located in the lower right corner of your screen). The system tray icon indicates your connection status



**Table 6-2: System tray icons**

Icon	Meaning
	You are in service on the network but have no active data connection. The number of red bars indicates the signal strength.
	You have an active data connection. The number of green bars indicates the signal strength.

## Online Help

Watcher includes extensive online help to provide operating hints and step-by-step instructions for getting the most from your AirCard.

You can access online help in several ways:

- Press <F1> in any window.
- Click the **Hints** button available in many windows.
- Use Windows Explorer to navigate to **Program Files > Sierra Wireless > AirCard 580 > Sprint > Watcher.chm**. Double-click to open the help file.

The help file has a table of contents and an index.

## Troubleshooting

The [online help](#) includes descriptions of most common error messages. Look in the table of contents under Troubleshooting.

For help with other problems:

- Consult the Sierra Wireless web site at [www.sierrawireless.com](http://www.sierrawireless.com), where you will find an extensive knowledge base that can be searched to address most problems, and the Installation Troubleshooting wizard (in the Support & Download section).
- Contact Sprint.



## >> 7: Technical Specifications

- LED operation
- Radio frequency and electrical specifications
- Environmental specifications

This chapter describes the function of the LED, and provides technical product data for the AirCard.

### LED operation

The AirCard has a single red/green LED on the antenna end of the card. The LED operates as follows:

**Table 7-1: LED operation**

LED Behavior	Indicates
<b>Red blinking slowly</b>	The AirCard is powering up, or no service is available.
<b>Green blinking rapidly</b>	An active data session is in progress.
<b>Green blinking slowly</b>	The AirCard has acquired a channel and is in idle mode (no active data session is in progress).
<b>Solid red</b>	An error has occurred.

## Radio frequency and electrical specifications

**Table 7-2: Radio frequency and electrical specifications**

<b>Approvals</b>	Compliant with: IS-2000 Release 1.0 (CDMA (1X)) IS-707-A Data, IS-856 (CDMA 1x-EVDO) IS-866, IS-878, IS-890, CDMA Developers Group FCC (ID: PNF-PC3220P) Industry Canada
<b>Voltage</b>	+3.3 Vdc from PCMCIA Slot
<b>Current</b>	Maximum: 950 mA Typical data call current (talk mode): 370 mA (1X) 470 mA (1xEV-DO) Standby: 110 mA (1xEV-DO/IS2000 hybrid mode)
<b>Transmitter power</b>	200 mW (+23 dBm)
<b>Transmit</b>	PCS: 1805 to 1870 MHz Cellular: 824 to 849 MHz
<b>Receive</b>	PCS: 1715 to 1780 MHz Cellular: 868 to 894 MHz
<b>Channel spacing</b>	1.25 MHz
<b>Frequency stability</b>	±150 Hz

## Environmental specifications

**Table 7-3: Environmental specifications**

<b>Operating temperature</b>	-20 to +60°C (ambient, outside PCMCIA enclosure)
<b>Storage temperature</b>	-30 to +65°C
<b>Humidity</b>	95%, non-condensing
<b>Vibration</b>	15 g peak 10 to 2000 Hz (non-operating)
<b>Drop</b>	30" (76.2 cm) on to vinyl covered concrete



## >> Appendix A: Glossary

## A

<b>1X</b>	One Times Radio Transmission Technology (the "one times" refers to the frequency spectrum). A high-speed standard for cellular <b>packet</b> data communications.
<b>1x-EVDO</b>	A high-speed standard for cellular <b>packet</b> data communications. Supports Internet connections with broadband-like speeds (where available; see "Important Notice" on page 1). Actual speed depends on the network conditions.
<b>bps</b>	<b>bits per second</b> —The actual data speed over the transmission medium.
<b>CDMA</b>	<b>Code Division Multiple Access</b> —A wideband spread spectrum technique used in digital cellular, personal communications services, and other wireless networks. Wide channels (1.25 <b>MHz</b> ) are obtained through spread spectrum transmissions, thus allowing many active users to share the same channel. Each user is assigned a unique digital code, which differentiates the individual conversations on the same channel.
<b>CDMA 1X</b>	Also known as <b>1X</b> , this is a high-speed standard for <b>CDMA</b> cellular communications.
<b>dormant</b>	The <b>packet</b> data connection has the logical PPP session left open while the underlying physical link (the radio channel) is released. When traffic is to resume, a radio channel is re-acquired and the original PPP session resumes.
<b>ESN</b>	<b>Electronic Serial Number</b> —The unique serial number assigned to the modem for cellular network use.
<b>FCC</b>	<b>Federal Communications Commission</b> —The U.S. federal agency that is responsible for interstate and foreign communications. The FCC regulates commercial and private radio spectrum management, sets rates for communications services, determines standards for equipment, and controls broadcast licensing. Consult <b>www.fcc.gov</b> .
<b>firmware</b>	Software stored in ROM or EEPROM; essential programs that remain even when the system is turned off. Firmware is easier to change than hardware but more permanent than software stored on disk.
<b>host</b>	<ol style="list-style-type: none"><li>1. A computer that uses a modem or a similar device to answer a calling computer.</li><li>2. A source or destination in the communication network.</li><li>3. A computer that contains data or files to be accessed by client computers. Also known as a server.</li></ol>

<b>IS</b>	<b>Interim Standard</b> —After receiving industry consensus, the <a href="#">TIA</a> forwards the standard to ANSI for approval.
<b>IS-95</b>	The standard for <a href="#">CDMA</a> .
<b>kbps</b>	<b>kilobits per second</b> —Actually 1000, not 1024, as used in computer memory size measurements of kilobytes.
<b>LAN</b>	Local Area Network
<b>LED</b>	<b>Light Emitting Diode</b> —A semiconductor diode that emits visible or infrared light.
<b>MHz</b>	<b>Mega-Hertz</b> —One million cycles per second.
<b>Mbps</b>	Megabits per second
<b>packet</b>	A short fixed-length block of data including a header that is transmitted as a unit in a communications network.
<b>PC Card™</b>	Add-in memory and communications cards for portable computers. PC Card is a trademark of the <a href="#">PCMCIA</a> .
<b>PCMCIA</b>	<b>Personal Computer Memory Card International Association</b> —The organization that standardizes PC Cards.
<b>PCS</b>	<b>Personal Communications Services</b> —A cellular communication infrastructure that uses a different frequency range than AMPS.
<b>roaming</b>	A cellular subscriber is in an area where service is obtained from a cellular service provider other than Sprint.
<b>system tray</b>	Usually located in the lower right corner of your screen
<b>TIA</b>	<b>Telecommunications Industry Association</b> —A standards setting trade organization, whose members provide communications and information technology products, systems, distribution services and professional services in the United States and around the world. Consult <a href="http://www.tiaonline.org">www.tiaonline.org</a> .
<b>VPN</b>	Virtual Private Network

# >> | Index

## Numerics

- 1X
  - description, 8
  - indicator, 26
- 1xEV-DO
  - description, 8
  - indicator, 25
- 3G
  - description, 8

## A

- account
  - activation, 13
  - configuration, 19
- activation
  - overview, 13
  - manual, 19
- Activation Wizard, 19
- always on top, 25

## C

- call status area, 26
- care and maintenance, 21
- CDMA 1X
  - description, 8
  - indicator, 26
- CDMA network
  - 3G services, 8
  - frequency bands, 9
  - service providers, 10
- close button, 24
- compact view, 24
- connection status
  - indicator, 27
- connection status area, 25
- coverage, 10

## D

- data
  - high-speed, 8
- disk space required, 16
- docking, 25
- dormant, 26
- drivers
  - description, 9

## E

- ESN, 14
- EV-DO
  - description, 8
  - indicator, 25

## F

- frequency bands, CDMA network, 9
- full view
  - description, 23
  - toggle button, 24

## H

- hardware
  - inserting, 18
  - removing, 18
- help, 27
- high-speed packet data, 8

## I

- I/O space (input/output space), 16
- icons
  - connection status, 25
  - minimized, 27
  - system tray, 27
  - see also indicators
- in use indicator, 26
- indicators
  - connection status, 27
  - in use, 26
- inserting the AirCard, 18
- installation
  - hardware, 18
  - software, 15–18
  - troubleshooting wizard, 27
- IRQ (interrupt request), 16

## M

- memory required, 16
- minimize button, 24
- minimized icons, 27

## N

- Network Adapter Manager, 9

### O

online Help, [27](#)  
operating hints, [27](#)

### P

PowerSave, [26](#)  
pre-activation, [13](#)

### R

removing the AirCard, [18](#)  
requirements, system, [15](#)  
roaming  
    definition, [11](#)  
    indicator, [26](#)

### S

signal strength  
    indicator - CDMA network, [25](#)  
    obtaining optimal, [21](#)

software

    AirCard, [9](#)  
    installation, [15–18](#)

status area

    call status area, [26](#)  
    connection status area, [25](#)  
    Windows system tray, [27](#)

system requirements, [15](#)  
system tray icons, [27](#)

### T

taskbar icons, [27](#)  
tips, operating, [27](#)  
troubleshooting, [27](#)

### V

virtual private network, [7](#)  
VPN, [7](#), [7](#)

### W

Windows system tray icons, [27](#)  
wizard - installation troubleshooting, [27](#)



