



Group 1 - Compact Excavators and Attachments

<u>BOBCAT COMPANY SUGGESTED PRICE LIST - 01-01-2018</u>		
 <h1>Bobcat Company</h1>		
<u>ORDER ADDRESS:</u> CLARK EQUIPMENT COMPANY dba BOBCAT COMPANY 250 EAST BEATON DRIVE PO BOX 6000 WEST FARGO, ND 58078-6000		
<u>Government Sales Points of Contact:</u>		<u>Phone:</u>
Heather Messmer - Government Accounts Sales Support Mgr. heather.messmer@doosan.com		(701) 241-8719
Jesse Rheault - Government Contracts Manager jesse.rheault@doosan.com		(701) 241-8759
Randy Fuss - Director, Government Accounts randy.fuss@doosan.com		(701) 241-8746
TOLL FREE #: 800-965-4232, Opt#2 FAX#: 701-280-7860		
PROMPT PAYMENT TERMS: Net 30 TIME OF DELIVERY: 60 to 90 Days ARO COMMERCIAL CREDIT CARD: Accepted (Visa/Mastercard/American Express)		
TID#: 38-0425350		
<u>REMIT TO ADDRESS:</u> CLARK EQUIPMENT COMPANY dba BOBCAT COMPANY 75 REMITTANCE DR, SUITE 1130 CHICAGO, IL 60675-1130		
Product		Discount Percent
SSL (Skid Steer Loader) - Group 11		30.0%
CTL (Compact Track Loader) - Group 8		30.0%
AWS (All Wheel Steer Loader) - Group 8		30.0%
Loader Attachments - Group 8 and 11		24.0%
MX (Mini or Compact Excavators) - Group 1		30.0%
MX Attachments - Group 1		24.0%

2-1-15 - Updated 3600/3650 PNs-prices

3-1-15 - updated some additions

3-5-15 - 8811 deleted

3-10-15 - removal of certain backhoes from Ldr Attach list

3-29-15 - Added S740 and Tier 4 machine pricing chged

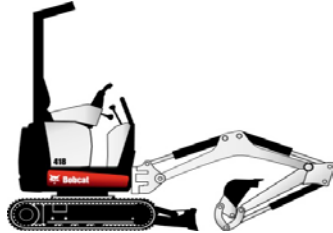
4-28-15 - E26 - PN and some opt price changes and opt additions

2018 - Jan 2018 Pricing, Discontinued Products Removed, including obsolete versahandlers

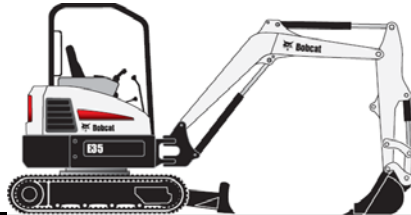
January 1, 2018
BOBCAT SLP Pages



Part Number	Compact Excavator Description	SLP in US\$	Discount Percent	Price
M5545	E10 Excavator (equipped with Tier 4 engine)	\$23,466.37	30.0%	\$ 16,426.46



Part Number	Compact Excavator Description	SLP in US\$	Discount Percent	Price
M5519	E20 Compact Excavator (equipped with Tier 4 engine)	\$31,467.70	30.0%	\$ 22,027.39



Part Number	MUST ORDER A CONTROL PKG Description	SLP in US\$	Discount Percent	Price
M5519-A02-C00	Basic Control Package Incls Foot Controls for Auxiliary Hydraulics and Boom Swing Control and Manual Shift Travel System	\$0.00	30.0%	\$ -
M5519-A01-C01	Control Enhancement Package Incls Fingertip Auxiliary Hydraulics and Boom Swing Controls and Auto-Shift Travel System (Advanced Controls Pkg)	\$491.89	30.0%	\$ 344.32

Part Number	Factory Installed Options Description	SLP in US\$	Discount Percent	Price
M5519-A02-C02	Heated Cab Incls Enclosed ROPS/TOPS Cab with Heater, Fingertip Auxiliary Hydraulics &	\$3,726.77	30.0%	\$ 2,608.74

Boom Swing Control and Auto-shift Travel System (Advanced Controls Pkg)

Part Number	Compact Excavator Description	SLP in US\$	Discount Percent	Price
M3003	E26 Compact Excavator (equipped with Tier 4 engine)	\$37,338.86	30.0%	\$ 26,137.20



M3003-R51-C02	TELEMATICS, US	\$0.00	30.0%	\$ -
M3003-R51-C03	TELEMATICS, CANADA	\$0.00	30.0%	\$ -

Part Number	Air Conditioned/Heated Cab Packages Description	SLP in US\$	Discount Percent	Price
M3303-P01-A20	A20 OPTION PACKAGE Includes Enclosed Cab with HVAC and Cloth Suspension Seat.	\$5,732.00	0.0%	\$ 5,732.00
M3003-P01-A40	A40 OPTION PACKAGE Includes Enclosed Cab with HVAC, Cloth Suspension Seat, Deluxe Display Panel w/ Keyless Start and Radio.	\$6,627.00	0.0%	\$ 6,627.00

Part Number	Air Conditioned/Heated Cab Packages Description	SLP in US\$	Discount Percent	Price
M3003-P01-O40	O40 OPTION PACKAGE Includes Open Canopy, Vinyl Suspension Seat and Deluxe Display Panel w/ Keyless Start	\$698.00	0.0%	\$ 698.00

Part Number	Factory Installed Options Description	SLP in US\$	Discount Percent	Price
M3003-R08-C03	Hydraulic Clamp (std arm or long arm)	\$1,816.13	30.0%	\$ 1,271.29
M3003-R03-C02	Long Arm & Add on Counterweight	\$1,320.17	30.0%	\$ 924.12
M3003-R07-C02	Secondary Auxiliary Hydraulics	\$1,093.54	30.0%	\$ 765.48
M3003-R14-C04	Deluxe Panel with Keyless Start	\$506.12	30.0%	\$ 354.28
M3003-R11-C02	Travel Motion Alarm	\$289.65	30.0%	\$ 202.75

Part	Compact Excavator	SLP in US\$	Discount Percent	Price
------	-------------------	-------------	------------------	-------

Number	Description				
M3309	E32 R-Series Compact Excavator (equipped with Tier 4 engine) ***R Series*** 25HP	\$46,581.09	30.0%	\$	32,606.77



--	--	--	--	--	--

M3309-R51-C02	TELEMATICS, US	\$0.00	30.0%	\$	-
M3309-R51-C03	TELEMATICS, CANADA	\$0.00	30.0%	\$	-
Part Number	Air Conditioned/Heated Cab Packages Description	SLP in US\$	Discount Percent		Price
M3309-P01-A40	A40 Option Package	\$7,172.00	30.0%	\$	5,020.40
M3309-P01-A30	A30 Option Package	\$6,232.00	30.0%	\$	4,362.40
M3309-P01-A20	A20 Option Package	\$5,732.00	30.0%	\$	4,012.40

<u>A20</u>	<u>A40</u>
Enclosed Cab with Heat/AC	Enclosed Cab with Heat/AC
	Heated Seat
	Hydraulic X-Change
	Auto HVAC Control

<u>A30</u>	Deluxe Panel w/ Keyless Start and Radio				
Enclosed Cab with Heat/AC					
Heated Seat					
Auto HVAC Control					

Part Number	Open Cab Packages Description	SLP in US\$	Discount Percent		Price
M____-P01-O40	O40 Option Package	\$498.00	30.0%	\$	348.60

<u>O40</u>	
Deluxe Display	
Keyless Start	

Part	Factory Installed Options	SLP in US\$	Discount Percent		Price
------	---------------------------	-------------	------------------	--	-------

Number	Description				
M___-R03-C02	Long Arm & Counterweight Increases operating weight by 863 lbs	\$1,570.18	30.0%	\$	1,099.13
M___-R03-C03	Extendable Arm & Counterweight Increases operating weight by 1094 lbs. Pro-Clamp not compatible with Extendable Arm	\$4,268.46	30.0%	\$	2,987.92
M___-R08-C03	Hydraulic Clamp - Avail for Std Arm, Long Arm and Extendable Arm. Second Auxiliary Hydraulics are required when ordering both the Hydraulic Clamp and Extendable Arm from the factory.	\$1,949.26	30.0%	\$	1,364.48
M___-R04-C02	Keyless Start	\$167.69	30.0%	\$	117.38
M___-R06-C0_	Hydraulic X-Change	\$1,594.57	30.0%	\$	1,116.20
M___-R08-C12	Pro Clamp™ System (Class 3) - Available for Std Arm and Long Arm Only Includes Pro Clamp base and Material Clamp	\$2,457.41	30.0%	\$	1,720.19
M___-R26-C02	Radio (CAB OPTION ONLY – RADIO IS INCLUDED WITH A40 OPTION)	\$403.47	30.0%	\$	282.43
M___-R07-C02	Second Auxiliary Hydraulics	\$1,093.54	30.0%	\$	765.48
M___-R11-C02	Travel Motion Alarm	\$289.65	30.0%	\$	202.75

Part Number	Factory Installed Track Options Description	SLP in US\$	Discount Percent	Price
M___-R02-C02	Steel Tracks Increases operating weight by 212 lbs	\$2,423.88	30.0%	\$ 1,696.71

Part Number	Compact Excavator Description	SLP in US\$	Discount Percent	Price
M3311	E35 R-Series ZTS 25HP Compact Excavator (equipped with Tier 4 engine)	\$47,978.51	30.0%	\$ 33,584.95
M3307	E35 R-Series ZTS 35HP Compact Excavator (equipped with Tier 4 engine)	\$51,886.18	30.0%	\$ 36,320.33



M33__-R51-C02	TELEMATICS, US	\$0.00	30.0%	\$ -
M33__-R51-C03	TELEMATICS, CANADA	\$0.00	30.0%	\$ -

Part	Air Conditioned/Heated Cab Packages	SLP in US\$	Discount Percent	Price
------	-------------------------------------	-------------	------------------	-------

Number	Description				
M3311-P01-A40	A40 Option Package	\$7,172.00	30.0%	\$	5,020.40
M3311-P01-A30	A30 Option Package	\$6,232.00	30.0%	\$	4,362.40
M3311-P01-A20	A20 Option Package	\$5,732.00	30.0%	\$	4,012.40

<u>A20</u>	<u>A40</u>
Enclosed Cab with Heat/AC	Enclosed Cab with Heat/AC
	Heated Seat
<u>A30</u>	Hydraulic X-Change
Enclosed Cab with Heat/AC	Auto HVAC Control
Heated Seat	Deluxe Panel w/ Keyless Start and Radio
Auto HVAC Control	

Part	Open Cab Packages	SLP in US\$	Discount Percent	Price
Number	Description			
M____-P01-O40	O40 Option Package	\$498.00	30.0%	\$ 348.60

<u>O40</u>
Deluxe Display
Keyless Start

Part	Factory Installed Options	SLP in US\$	Discount Percent	Price
Number	Description			
M____-R03-C02	Long Arm & Counterweight	\$1,570.18	30.0%	\$ 1,099.13
	Increases operating weight by 675 lbs			
M____-R03-C03	Extendable Arm & Counterweight	\$4,268.46	30.0%	\$ 2,987.92
	Increases operating weight by 906 lbs. Pro-Clamp not compatible			
M3207-R12-C02	Hydraulic Angle Blade – E35 Only	\$2,602.74	30.0%	\$ 1,821.92
	Increases operating weight by 212 lbs			
M____-R06-C0_	Hydraulic X-Change	\$1,594.57	30.0%	\$ 1,116.20
M____-R04-C02	Keyless Start	\$167.69	30.0%	\$ 117.38
M____-R08-C03	Hydraulic Clamp - Avail for Std Arm, Long Arm and Extendable Arm.	\$1,949.26	30.0%	\$ 1,364.48
	Second Auxiliary Hydraulics are required when ordering both the Hydraulic Clamp and Extendable Arm from the factory.			
M____-R08-C12	Pro Clamp™ System (Class 3) - Available for Std Arm and Long Arm Only	\$2,457.41	30.0%	\$ 1,720.19
	Includes Pro Clamp base and Material Clamp			
M____-R26-C02	Radio (CAB ONLY)	\$403.47	30.0%	\$ 282.43
M____-R07-C02	Second Auxiliary Hydraulics - Standard/Long Arm	\$1,093.54	30.0%	\$ 765.48
M____-R11-C02	Travel Motion Alarm	\$289.65	30.0%	\$ 202.75

Part Number	Factory Installed Track Options Description	SLP in US\$	Discount Percent	Price
M____-R02-C02	Steel Tracks Increases operating weight by 212 lbs	\$2,423.88	30.0%	\$ 1,696.71

Part Number	Compact Excavator Description	SLP in US\$	Discount Percent	Price
M3213	E42 Compact Excavator (equipped with Final Tier 4 engine)	\$53,888.29	30.0%	\$ 37,721.80
M3215	E45 Compact Excavator (equipped with Final Tier 4 engine)	\$60,737.14	30.0%	\$ 42,516.00



M32__-R51-C02	TELEMATICS, Us	\$0.00	30.0%	\$ -
M32__-R51-C03	TELEMATICS, CANADA	\$0.00	30.0%	\$ -

Part Number	Air Conditioned/Heated Cab Packages Description	SLP in US\$	Discount Percent	Price
M32__-P01-A40	A40 Option Package	\$7,129.00	30.0%	\$ 4,990.30
M32__-P01-A20	A20 Option Package	\$6,234.00	30.0%	\$ 4,363.80

<u>A20</u>	<u>A40</u>
Enclosed Cab with Heat/AC	Enclosed Cab with Heat/AC
Cloth Suspension Seat	Cloth Suspension
	Deluxe Display Panel w/ Keyless Start and Radio

Part Number	Open Cab Packages Description	SLP in US\$	Discount Percent	Price
M33__-P01- O40	O40 Option Package	\$498.00	30.0%	\$ 348.60

O40

Open Canopy
Vinyl Suspension Seat

Deluxe Display w/ Keyless Start

Part Number	Factory Installed Options Description	SLP in US\$	Discount Percent	Price
M3213-R03-C02	Long Arm & Counterweight	\$2,066.14	30.0%	\$ 1,446.30
M____-R03-C02	Long Arm & Counterweight	\$2,066.14	30.0%	\$ 1,446.30
	Increases operating weight by 460 lbs			
M3213-R03-C03	Extendable Arm & Counterweight	\$5,789.86	30.0%	\$ 4,052.90
M3215-R03-C03	Extendable Arm & Counterweight (E45 Only)			
	Increases operating weight by 730 lbs. Pro-Clamp not compatible			
M3213-R12-C02	Hydraulic Angle Blade	\$2,602.74	30.0%	\$ 1,821.92
M____-R12-C02	Hydraulic Angle Blade			
	Increases operating weight by 170 lbs			
M3213-R04-C02	Keyless Start	\$206.31	30.0%	\$ 144.42
	Available for Standard Arm and Long Arm only			
M3213-R08-C08	Hydraulic Clamp (CLASS IV) – E42 OR E45	\$2,469.61	30.0%	\$ 1,728.73
	Available for Standard Arm, Long Arm and Extendable Arm.			
	Note: Second Auxiliaries are automatically included on Extendable Arm/Clamp optioned machines. Increases operating weight by 218 lb.			
M32__-R06-C0_	Hydraulic X-Change	\$1,595.59	30.0%	\$ 1,116.91
M3213-R08-C12	Pro Clamp™ System (Class IV) Avail for Std Arm and Long Arm Only	\$2,977.76	30.0%	\$ 2,084.43
	Includes Pro Clamp Base and Material Clamp			
M____-R04-C02	Keyless Start	\$167.69	30.0%	\$ 117.38
M3213-R04-C02	Keyless Start			
M____-R26-C02	Radio - Cab Only (Included in A40 Pkg)	\$403.47	30.0%	\$ 282.43
M3213-R02-C02	Steel Tracks	\$2,726.73	30.0%	\$ 1,908.71
	Increases operating weight by 77 lbs			
M____-R11-C02	Travel Motion Alarm	\$289.65	30.0%	\$ 202.75

Part Number	Compact Excavator Description	SLP in US\$	Discount Percent	Price
-------------	-------------------------------	-------------	------------------	-------

M3219	E50 Compact Excavator (equipped with Final Tier 4 engine)	\$67,758.75	30.0%	\$	47,431.13
M3221	E55 Compact Excavator (equipped with Final Tier 4 engine)	\$76,921.71	30.0%	\$	53,845.20



Part Number	Air Conditioned/Heated Cab Packages Description	SLP in US\$	Discount Percent	Price	
M32__-P01-A40	A40 Option Package	\$7,129.00	30.0%	\$	4,990.30
M32__-P01-A20	A20 Option Package	\$6,234.00	30.0%	\$	4,363.80

<u>A20</u>	<u>A40</u>
Enclosed Cab with Heat/AC	Enclosed Cab with Heat/AC
Cloth Suspension Seat	Cloth Suspension
	Deluxe Display Panel w/ Keyless Start and Radio

Part Number	Open Cab Packages Description	SLP in US\$	Discount Percent	Price	
M33__-P01- O40	O40 Option Package	\$498.00	30.0%	\$	348.60

<u>O40</u>
Open Canopy
Vinyl Suspension Seat
Deluxe Display w/ Keyless Start

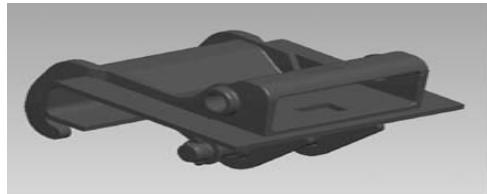
Part Number	Factory Installed Options Description	SLP in US\$	Discount Percent	Price	
M____-R03-C02	Long Arm w/ Heavy Counterweight (E50 Only)	\$1,570.18	30.0%	\$	1,099.13
	Increases operating weight by 460 lbs.				
M3221-R03-C03	Extendable Arm & Counterweight (E55 Only)	\$5,993.12	30.0%	\$	4,195.18
	Increases operating weight by 331 lbs.				
	Pro Clamp™ is not compatible with Extendable Arm.				
M____-R12-C02	Hydraulic Angle Blade	\$2,602.74	30.0%	\$	1,821.92
	Increases operating weight by 346 lbs				

M____-R04-C02	Keyless Start - Provides one Owner Code and Two User Cones (Five Digit)	\$167.69	30.0%	\$	117.38
M32__-R08-C__	Hydraulic Clamp - Class 4				
	Available for E50 Standard Arm & Long Arm and E55. Increases operating weight by 218 lb.				
M3221-R08-C10	Hydraulic Clamp for Extendable Arm- E55 Only	\$2,469.61	30.0%	\$	1,728.73
	Note: Second Auxiliaries are automatically included on Extendable Arm/Clamp optioned machines.				
	Increases operating weight by 218 lb				
M3215-R08-C12	Pro Clamp - E45 - Available for Std Arm and Long Arm Only	\$2,977.76	30.0%	\$	2,084.43
	Available for Std Arm and Long Arm Only				
M3219-R08-C12	Pro Clamp - E50 - Available for Std Arm and Long Arm Only	\$2,977.76	30.0%	\$	2,084.43
	Includes Pro Clamp base and Material Clamp				
M____-R26-C02	Radio - Cab Machines Only (Included in A40 Pkg)	\$403.47	30.0%	\$	282.43
M____-R07-C02	Second Auxiliary Hydraulics (12 GPM)	\$1,093.54	30.0%	\$	765.48
M____-R02-C02	Steel Tracks	\$2,423.88	30.0%	\$	1,696.71
M____-R11-C02	Travel Motion Alarm	\$289.65	30.0%	\$	202.75
	Increases operating weight by 289 lbs				

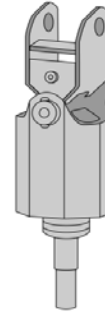
--



Part Number	Augers Description	SLP in US\$	Discount Percent	Price
-------------	--------------------	-------------	------------------	-------



Auger Interface



Auger Drive Unit

(E26, 324, E20)

6808799

Model 10 Auger Drive Unit

(If installing on a 322, must order bit, 322 Bolt-On X-Change, and interface listed below.
If installing on a E26 or E20 equipped with X-Change, must order bit and interface listed below.)

\$ 1,326.27 24.0% \$1,007.97

(E26, E32i, E32, E35i, E35, E42, E45, E50, E55, E63)

6809442

Model 15C Auger Drive Unit

(Must order Bit and if installing auger on an X-Change equipped excavator, must also order the interface P/N 6817100 listed below.)

(Auger drive unit is shipped with a 7/8" round bit retention pin, if used in conjunction with a hex bit a 5/8" Pin Kit P/N 6809733 is required.)

\$ 1,605.75 24.0% \$1,220.37

7145345

Model 15H Auger Hex Drive Unit

(Must order Bit and if installing auger on an X-Change equipped excavator, must also order the interface P/N 6817100 listed below.)

\$ 1,605.75 24.0% \$1,220.37

(E26, E32i, E32, E35i, E35, E42, E45, E50, E55, E63, E80, E85)

6809445

Model 30C Auger Drive Unit

(Must order Bit and if installing auger on an X-Change equipped excavator, must also order the interface P/N 6817100 OR 7169329 listed below.)

(Auger drive unit is shipped with a 7/8" round bit retention pin, if used in conjunction with a hex bit a 5/8" Pin Kit P/N 6809733 is required.)

\$ 2,154.56 24.0% \$1,637.46

7138264	Model 30H Auger Hex Drive Unit (Must order Bit and if installing auger on an X-Change equipped excavator, must also order the interface P/N 6817100 OR 7169329 listed below.)	\$	2,154.56	24.0%	\$1,637.46
NOTE: If using with E45, E50 and E55 Long Arm Excs, must order additional Hoses - PN 7214499 - Qty of 2					
(E42, E45, E50, E55, E63, E85)					
7220280	Model 35PH Auger Drive Unit (Must order Bit and if installing auger on an X-Change equipped excavator, must also order the interface P/N 6817100 OR 7169329 listed below.) (Auger drive unit is shipped with a 7/8" round bit retention pin, if used in conjunction with a hex bit a 5/8" Pin Kit P/N 6809733 is required.)	\$	3,272.49	24.0%	\$2,487.09
(E42, E45, E50, E55, E63, E85)					
7227984	Model 50PH Auger Hex Drive Unit (Must order Bit and if installing auger on an X-Change equipped excavator, must also order the interface P/N 6817100 OR 7169329 listed below.)	\$	3,826.37	24.0%	\$2,908.04

Part Number	Accessories Description	SLP in US\$	Discount Percent	Price
-------------	-------------------------	-------------	------------------	-------

Auger Drive & Bit Recommendations

Model 10 Augers on E20/E26 Excavators—Recommended bit size 6" – 36"
 Model 15C/15H & 30C/30H Augers on E26-435, E32i-E55, E63, E85 Excavators—Recommended bit size 6"-36"
 Model 35PH/50PH Augers—Recommended bit size - HD - 8", 12", 18", 24", 30", 36", 48" And Rock Bits - 8", 12", 18", 24", 30"
 Auger bit combinations should be used as a guideline. Recommendations are based upon average digging conditions.

Part Number	Breaker, Hydraulic Description	SLP in US\$	Discount Percent	Price



Part Number	HB280 Breaker Description	SLP in US\$	Discount Percent	Price
(418)				
7133202	HB280 Breaker (Includes Nail Point, gauge tool, retainer clip and hose protector) (Must also order hose kit and mounting cap)	\$ 4,608.92	24.0%	\$3,502.78
<i><u>Accessories – HB280</u></i>				
7170566	Hose Kit - 418	\$ 182.93	24.0%	\$139.03
7160677	Pin-On Mounting Cap - 418	\$ 91.47	24.0%	\$69.51
Part Number	HB680 Breaker Description	SLP in US\$	Discount Percent	Price
(E20, E26)				
7113419	HB680 Breaker (Includes Nail Point, fixing cap bolts, cradle, isolation mount, gauge tool, retainer clip and hose protector) (Must also order X-Change Mounting Frame and Hose Kit)	\$ 4,502.21	24.0%	\$3,421.68
<i><u>Mounting Frames –HB680</u></i>				
7117752	Pin-On Mounting Cap – E20 (Must also order a hose kit, P/N 7117823)	\$ 284.56	24.0%	\$216.27
7113656	X-Change Mounting Cap – E26 (Must also order a hose kit, P/N 7117823 or 7117832)	\$ 416.68	24.0%	\$316.68
<i><u>Accessories – HB680</u></i>				
7117823	Hose Kit – E20, E26 (Includes hoses and quick couplers)	\$ 198.18	24.0%	\$150.62
7117832	Hose Kit – E26 Long Arm (Includes hoses and quick couplers)	\$ 198.18	24.0%	\$150.62
Part Number	HB880 Breaker Description	SLP in US\$	Discount Percent	Price
(E32i, E32, E35i, E35)				
7113420	HB880 Breaker (Includes Nail Point, fixing cap bolts, cradle, isolation mount, gauge tool, retainer clip	\$ 6,377.28	24.0%	\$4,846.73

and hose protector) (Must also order X-Change Mounting Cap and Hose Kit)
(Must also order Auxiliary Hydraulics p/n 7126596 if using with 329 excavator)

Mounting Frame – HB880

7113657	X-Change Mounting Cap (Must also order a hose kit)	\$	416.68	24.0%	\$316.68
----------------	--	----	--------	--------------	-----------------

Accessories - HB880

6728963	Hose Kit - E32, E35 (Includes hoses and quick couplers)	\$	198.18	24.0%	\$150.62
7180019	Hose Kit - E32 Long Arm, E35 Long Arm (Includes hoses and quick couplers)	\$	238.83	24.0%	\$181.51

Part Number	HB980 Breaker Description	SLP in US\$	Discount Percent	Price
(E32i, E32, E35i, E35, E42, E45, E50)				

7113421	HB980 Breaker (Includes Nail Point, fixing cap bolts, cradle, isolation mount, gauge tool, retainer clip and hose protector) (Must also order X-Change Mounting Cap and Hose Kit) (Must also order Auxiliary Hydraulics p/n 7126596 if using with 329 excavator)	\$	7,988.12	24.0%	\$6,070.97
----------------	---	----	----------	--------------	-------------------

Mounting Frame –HB980

7113657	X-Change Mounting Cap (Must also order a hose kit)	\$	416.68	24.0%	\$316.68
----------------	--	----	--------	--------------	-----------------

Accessories –HB980

6728967	Hose Kit - E42, E50 Long Arm, E55 Long Arm (Includes hoses and quick couplers)	\$	198.18	24.0%	\$150.62
6728963	Hose Kit - E32,E35 (Includes hoses and quick couplers)	\$	198.18	24.0%	\$150.62
7180019	Hose Kit - E32,E35,E42,E45 - All with Long Arm (Includes hoses and quick couplers)	\$	238.83	24.0%	\$181.51
7114762	Hose Kit - E42,E45,E50 (Includes hoses and quick couplers)	\$	198.18	24.0%	\$150.62

Part Number	HB1180 Breaker Description	SLP in US\$	Discount Percent	Price
(E42, E45, E50, E55, E63, E85)				

7115923	HB1180 Breaker (Includes Nail Point, fixing cap bolts, cradle, isolation mount, gauge tool, retainer clip and hose protector) (Must also order X-Change Mounting Cap and Hose Kit) *Approved for use with E60, SN AGSZ11321 & Above	\$	10,503.46	24.0%	\$7,982.63
<u>Mounting Frame –HB1180</u>					
(E42, E45, E50, E55, E63, E85)					
7117325	X-Change Mounting Cap (Must also order a hose kit)	\$	564.05	24.0%	\$428.68
(E80, E85)					
7168502	Pin-On Mounting Cap (Must also order a hose kit, P/N 7130290)	\$	731.74	24.0%	\$556.12
(E85 R-Series)					
7307177	Pin-On Mounting Cap (Mounting cap uses 55mm pins)	\$	731.74	24.0%	\$556.12
<u>Accessories –HB1180</u>					
7114762	Hose Kit-E42, E45, E50	\$	198.18	24.0%	\$150.62
6728967	Hose Kit – E50 - All with long arm, E55	\$	198.18	24.0%	\$150.62
7180019	Hose Kit – E42, E45 – all with long arm	\$	238.83	24.0%	\$181.51
7176608	Hose Kit – E63 , E85	\$	279.48	24.0%	\$212.41

Part Number	HB1380 Breaker Description	SLP in US\$	Discount Percent	Price
(E63, E85)				
7157576	HB1380 Breaker (Includes Nail Point, fixing cap bolts, cradle, isolation mount, gauge tool, retainer clip and hose protector) (Must also order Loader Mounting Frame and Hose Kit) (Special Applications Kit must be used when operating a Hydraulic Breaker) *Approved for use with E60, SN AGSZ11321 & Above	\$ 13,034.05	24.0%	\$9,905.88
<u>Mounting Frame –HB1380</u>				
(E63)				
7117325	X-Change Mounting Cap (Must also order a hose kit, P/N 7176608)	\$ 564.05	24.0%	\$428.68
(E85)				
7168502	Pin-On Mounting Cap (Must also order a hose kit, P/N 7176608)	\$ 731.74	24.0%	\$556.12
(E85 R-Series)				

7307177	Pin-On Mounting Cap (Mounting cap uses 55mm pins)	\$	731.74	24.0%	\$556.12
<i><u>Accessories – HB1380</u></i>					
7176608	Hose Kit E63, E85 (Includes hoses and quick couplers)	\$	279.48	24.0%	\$212.41

Part Number	Description	SLP in US\$	Discount Percent	Price
(E85)				
7133203	HB2380 Breaker (Includes Nail Point, fixing cap bolts, cradle, isolation mount, and hose protector) (Must also order Pin-On Mounting Cap and Hose Kit)	\$ 16,016.89	24.0%	\$12,172.83
<i><u>Mounting Frames –HB2380</u></i>				
(E85)				
7168502	Pin-On Mounting Cap (Must also order a hose kit, P/N 7176608)	\$ 731.74	24.0%	\$556.12
(E85 R-Series)				
7307177	Pin-On Mounting Cap (Mounting cap uses 55mm pins)	\$ 731.74	24.0%	\$556.12
<i><u>Accessories – HB2380</u></i>				
7176608	Hose Kit- E85 (Includes hoses and quick couplers)	\$ 279.48	24.0%	\$212.41

Part Number	Buckets Description	SLP in US\$	Discount Percent	Price
(418 Pin-On Style)				
7157626	8" Trenching Bucket with Teeth	\$ 386.19	24.0%	\$293.51
7140493	12" Trenching Bucket with Teeth	\$ 421.76	24.0%	\$320.54
7140489	16" Trenching Bucket with Teeth	\$ 437.01	24.0%	\$332.13
7150275	32" Grading Bucket, No Teeth	\$ 523.39	24.0%	\$397.78
(E20)				
6715495	9" Trenching Bucket, 2 Bolt-On Teeth	\$ 426.85	24.0%	\$324.40
6715496	12" Trenching Bucket, 3 Bolt-On Teeth	\$ 472.58	24.0%	\$359.16
6715497	16" Trenching Bucket, 3 Bolt-On Teeth	\$ 518.31	24.0%	\$393.92

7109522	18" Trenching Bucket, 4 Bolt-On Teeth	\$	533.56	24.0%	\$405.50
6715498	20" Trenching Bucket, 4 Bolt-On Teeth	\$	564.05	24.0%	\$428.68
6715499	39" Grading Bucket, No Teeth	\$	594.54	24.0%	\$451.85

Note: The 9"- 18" buckets are the same buckets as used with the 406 Backhoe.

(E26)

7333229	12" TRENCHING BUCKET, SMOOTH LIP (Not compatible with hydraulic clamp)	\$	696.17	24.0%	\$529.09
7333230	12" TRENCHING BUCKET, 3 WELD-ON TEETH (Not compatible with hydraulic clamp)	\$	599.62	24.0%	\$455.71
7333244	16" TRENCHING BUCKET, SMOOTH LIP	\$	772.39	24.0%	\$587.01
7333245	16" TRENCHING BUCKET, 4 WELD-ON TEETH	\$	630.11	24.0%	\$478.88
7333255	20" TRENCHING BUCKET, 4 WELD-ON TEETH	\$	680.92	24.0%	\$517.50
7333260	24" TRENCHING BUCKET, 4 WELD-ON TEETH	\$	731.74	24.0%	\$556.12
7333978	36" GRADING BUCKET, NO TEETH	\$	995.97	24.0%	\$756.94
7333979	48" GRADING BUCKET, NO TEETH	\$	995.97	24.0%	\$756.94

Note: These buckets are the same buckets as used with the 607 Backhoe.

6817096	55" GRADING BLADE	\$	736.82	24.0%	\$559.98
---------	-------------------	----	--------	-------	----------

CLASS III Buckets

(329, 331, 331E, 334, 430 X-Change™ Style) (E32, E35)

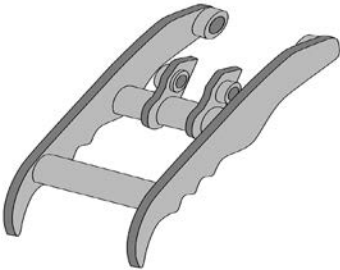
7323832	12" TRENCHING BUCKET, SMOOTH LIP	\$	640.27	24.0%	\$486.60
7323833	12" TRENCHING BUCKET, 3 WELD-ON TEETH	\$	828.28	24.0%	\$629.50
7324829	16" TRENCHING BUCKET, SMOOTH LIP	\$	709.38	24.0%	\$539.13
7324830	16" TRENCHING BUCKET, 4 WELD-ON TEETH	\$	894.34	24.0%	\$679.70
7323841	18" TRENCHING BUCKET, SMOOTH LIP	\$	782.55	24.0%	\$594.74
7323842	18" TRENCHING BUCKET, 4 WELD-ON TEETH	\$	975.65	24.0%	\$741.49
7323820	20" TRENCHING BUCKET, SMOOTH LIP	\$	792.71	24.0%	\$602.46
7323821	20" TRENCHING BUCKET, 4 WELD-ON TEETH	\$	848.61	24.0%	\$644.94
7323529	24" TRENCHING BUCKET, SMOOTH LIP	\$	848.61	24.0%	\$644.94
7323530	24" TRENCHING BUCKET, 4 WELD-ON TEETH	\$	1,072.20	24.0%	\$814.87
7323822	30" TRENCHING BUCKET, SMOOTH LIP	\$	901.46	24.0%	\$685.11
7323823	30" TRENCHING BUCKET, 5 WELD-ON TEETH	\$	1,016.30	24.0%	\$772.39
7323824	36" TRENCHING BUCKET, SMOOTH LIP	\$	955.32	24.0%	\$726.04

7323825	36" TRENCHING BUCKET, 6 WELD-ON TEETH	\$	1,112.85	24.0%	\$845.76
7333978	36" GRADING BUCKET, NO TEETH	\$	995.97	24.0%	\$756.94
7333979	48" GRADING BUCKET, NO TEETH	\$	995.97	24.0%	\$756.94
Note: This bucket are the same buckets as used with the 709 & 8811 Backhoes.					
6817096	55" GRADING BLADE	\$	736.82	24.0%	\$559.98
(E42 "Standard" Buckets) CLASS III BUCKETS					
7323832	12" TRENCHING BUCKET, SMOOTH LIP	\$	640.27	24.0%	\$486.60
7323833	12" TRENCHING BUCKET, 3 WELD-ON TEETH	\$	828.28	24.0%	\$629.50
7324829	16" TRENCHING BUCKET, SMOOTH LIP	\$	709.38	24.0%	\$539.13
7324830	16" TRENCHING BUCKET, 4 WELD-ON TEETH	\$	894.34	24.0%	\$679.70
7323841	18" TRENCHING BUCKET, SMOOTH LIP	\$	782.55	24.0%	\$594.74
7323842	18" TRENCHING BUCKET, 4 WELD-ON TEETH	\$	975.65	24.0%	\$741.49
7323529	24" TRENCHING BUCKET, SMOOTH LIP	\$	848.61	24.0%	\$644.94
7323530	24" TRENCHING BUCKET, 4 WELD-ON TEETH	\$	1,072.20	24.0%	\$814.87
(E42, E45, E50, E55, E63) CLASS IV BUCKETS					
7321975	12" TRENCHING BUCKET, SMOOTH LIP	\$	828.28	24.0%	\$629.50
7321974	12" TRENCHING BUCKET, 3 WELD-ON TEETH	\$	914.67	24.0%	\$695.15
7322080	18" TRENCHING BUCKET, SMOOTH LIP	\$	935.00	24.0%	\$710.60
7322082	18" TRENCHING BUCKET, 4 WELD-ON TEETH	\$	838.45	24.0%	\$637.22
7311869	24" TRENCHING BUCKET, SMOOTH LIP	\$	1,041.71	24.0%	\$791.70
7311868	24" TRENCHING BUCKET, 4 WELD-ON TEETH	\$	899.43	24.0%	\$683.56
7322087	30" TRENCHING BUCKET, SMOOTH LIP	\$	1,160.61	24.0%	\$882.07
7322088	30" TRENCHING BUCKET, 5 WELD-ON TEETH	\$	1,424.85	24.0%	\$1,082.89
7322090	36" TRENCHING BUCKET, SMOOTH LIP	\$	1,275.46	24.0%	\$969.35
7322091	36" TRENCHING BUCKET, 6 WELD-ON TEETH	\$	1,528.52	24.0%	\$1,161.67
7333657	36" GRADING BUCKET, NO TEETH	\$	1,366.92	24.0%	\$1,038.86
7333658	48" GRADING BUCKET, NO TEETH	\$	1,224.64	24.0%	\$930.73
7333659	60" GRADING BUCKET, NO TEETH	\$	1,224.64	24.0%	\$930.73
(APPROVED FOR USE WITH 335, 337, 341, & 435 X-CHANGE STYLE. NOT APPROVED FOR USE WITH E42-E63)					
6817096	55" GRADING BLADE	\$	736.82	24.0%	\$559.98

CLASS V BUCKETS

7333364	18" TRENCHING BUCKET, 4 WELD-ON TEETH	\$	1,021.38	24.0%	\$776.25
7333374	24" TRENCHING BUCKET, 4 WELD-ON TEETH	\$	1,123.01	24.0%	\$853.49
7333379	30" TRENCHING BUCKET, 5 WELD-ON TEETH	\$	1,234.80	24.0%	\$938.45
7333658	48" GRADING BUCKET, NO TEETH	\$	1,224.64	24.0%	\$930.73
7333659	60" GRADING BUCKET, NO TEETH	\$	1,224.64	24.0%	\$930.73
7171901	48" Tilting Grade Bucket, No Teeth	\$	7,607.01	24.0%	\$5,781.32
E85 R-SERIES PIN-ON BUCKETS*					
(E85) *Not compatible with M-Series E80, E85					
7322125	18" TRENCHING BUCKET, WITH 3 WELD-ON TEETH	\$	1,138.26	24.0%	\$865.07
7322123	24" TRENCHING BUCKET, WITH 4 WELD-ON TEETH	\$	1,300.86	24.0%	\$988.66
7322126	36" TRENCHING BUCKET, WITH 5 WELD-ON TEETH	\$	1,631.16	24.0%	\$1,239.68
7334506	60" GRADING BUCKET, NO TEETH	\$	2,047.84	24.0%	\$1,556.36

Part Number	Clamp, Hydraulic Description	SLP in US\$	Discount Percent	Price
-------------	------------------------------	-------------	------------------	-------



Hydraulic Clamp is NOT recommended in combination with Hydraulic Breakers

(E26) CLASS III

7206504	Hydraulic Clamp, standard arm (Incls cylinder, hoses & pins) (Price includes \$225 for installation)	\$	1,814.10	24.0%	\$1,378.71
7206505	Hydraulic Clamp, long arm (Incls cylinder, hoses & pin) (Price includes \$225 for installation)	\$	1,814.10	24.0%	\$1,378.71

(E32i, E32, E35i, E35) CLASS III

7171388	Hydraulic Clamp, standard arm (Incls cylinder, hoses & pins) (Includes cylinder, hoses & pins) (Price includes \$225 for installation)	\$	1,951.30	24.0%	\$1,482.98
7171389	Hydraulic Clamp, long arm (Incls cylinder, hoses & pin) (Includes cylinder, hoses & pins) (Price includes \$225 for installation)	\$	1,951.30	24.0%	\$1,482.98
7203200	Hydraulic Clamp, Extendable arm (Incls cylinder, hoses & pins) (The Hydraulic Clamp is approved for use with the extendable arm extended) (Price includes \$225 for installation)	\$	1,951.30	24.0%	\$1,482.98

(E42) CLASS III

7182692	Hydraulic Clamp, standard arm (incls cylinder, hoses & pins) (Price includes \$225 for installation)	\$	2,052.93	24.0%	\$1,560.22
7182693	Hydraulic Clamp, long arm (incls cylinder, hoses & pins) (Price includes \$225 for installation)	\$	2,052.93	24.0%	\$1,560.22

(E42, E45) CLASS IV

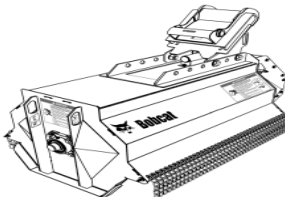
7186614	Hydraulic Clamp, standard arm (Incls cylinder, hoses & pins) (Price includes \$225 for installation)	\$	2,367.98	24.0%	\$1,799.66
7186615	Hydraulic Clamp, long arm (Incls cylinder, hoses & pins) (Price includes \$225 for installation)	\$	2,367.98	24.0%	\$1,799.66
7269969	Hydraulic Clamp, Extendable arm (Incls cylinder, hoses & pins) (Price includes \$225 for installation)	\$	2,367.98	24.0%	\$1,799.66

(E50) CLASS IV

7182661	Hydraulic Clamp, Std Arm (Incls cylinder, hoses & pins) (Price includes \$225 for installation)	\$	2,469.61	24.0%	\$1,876.90
----------------	---	----	----------	--------------	-------------------

7182663	Hydraulic Clamp, Long arm (Incls cylinder, hoses & pins) (Price includes \$225 for installation)	\$	2,469.61	24.0%	\$1,876.90
(E55) CLASS IV					
7182663	Hydraulic Clamp, (Incls cylinder, hoses & pins) (Price includes \$225 for installation)	\$	2,469.61	24.0%	\$1,876.90
7269968	Hydraulic Clamp, Extendable Arm (Incls cylinder, hoses & pins) (Price includes \$225 for installation)	\$	2,469.61	24.0%	\$1,876.90
(E63)					
7187919	Hydraulic Clamp, (Incls cylinder, hoses & pins) (Price includes \$225 for installation)	\$	2,754.17	24.0%	\$2,093.17
(E85)					
(E85 R-Series)					
7333391	Hydraulic Clamp, (Incls cylinder, hoses & pins)	\$	3,958.49	24.0%	\$3,008.45
Part Number	Pro Clamp System Description	SLP in US\$		Discount Percent	Price
(E32i, E32, E35i, E35) CLASS III					
7221006	Pro Clamp System Kit for Standard Arm (Not compatible with Ext Arm) (Includes cylinder, hoses & pins, Pro Clamp and Material Clamp) (Price includes \$225 for installation)	\$	2,459.45	24.0%	\$1,869.18
7221011	Pro Clamp System Kit for Long Arm (Not compatible with Ext Arm) (Includes cylinder, hoses & pins, Pro Clamp and Material Clamp) (Price includes \$225 for installation)	\$	2,459.45	24.0%	\$1,869.18
(E42, E45) CLASS IV					
7240479	Pro Clamp System Kit for Standard Arm (Not compatible with Ext Arm) (Includes cylinder, hoses & pins, Pro Clamp and Material Clamp) (Price includes \$225 for installation)	\$	2,947.27	24.0%	\$2,239.93
7240481	Pro Clamp System Kit for Long Arm (Not compatible with Ext Arm) (Includes cylinder, hoses & pins, Pro Clamp and Material Clamp) (Price includes \$225 for installation)	\$	2,947.27	24.0%	\$2,239.93
(E50) CLASS IV (Not compatible with Hydra-Tilt)					
7240475	Pro Clamp System Kit for Standard Arm	\$	2,947.27	24.0%	\$2,239.93

	(Includes cylinder, hoses & pins, Pro Clamp and Material Clamp) (Price includes \$225 for installation)				
7240477	Pro Clamp System Kit for Long Arm (Includes cylinder, hoses & pins, Pro Clamp and Material Clamp) (Price includes \$225 for installation)	\$	2,947.27	24.0%	\$2,239.93
(E55) CLASS IV (Not compatible with Hydra-Tilt)					
7240477	Pro Clamp System Kit for Standard Arm (Includes cylinder, hoses & pins, Pro Clamp and Material Clamp) (Price includes \$225 for installation)	\$	2,947.27	24.0%	\$2,239.93

Part Number	Flail Mower Description	SLP in US\$	Discount Percent	Price	
<div></div>					
(E32i, E32, E35i, E35)					
7225484	30" Flail Mower - 30FM (Approved only for excavator models equipped with an enclsoed cab) (Must also order a Case Drain Kit, hose kit and mounting cap)	\$	6,778.72	24.0%	\$5,151.83
(E42, E45, E50, E55)					
7225485	40" Flail Mower - 40FM (Approved only for excavator models equipped with an enclsoed cab) (Must also order a Case Drain Kit, hose kit and mounting cap)	\$	7,535.86	24.0%	\$5,727.26
(E63, E85)					
(Approved only for excavator models equipped with an enclsoed cab) (Must also order a Case Drain Kit, hose kit and mounting cap)					

Part Number	Factory Installed Accessories for Flail Mower Description	SLP in US\$	Discount Percent	Price
	<u>Accessories for 30" Flail Mower - 30FM</u>			

(E32, E32i, E35i, E35)					
7245468	Hoses for Std Arm (Incls Hoses and quick couplers) Must also order 7245617 and 7238337)	\$	208.34	24.0%	\$158.34
7238337	X-Change Mounting Cap (Mounting cap will arrive assembled on Flail Mower) (Must order Hoses)	\$	802.88	24.0%	\$610.19

Accessories for 40" Flail Mower - 40FM

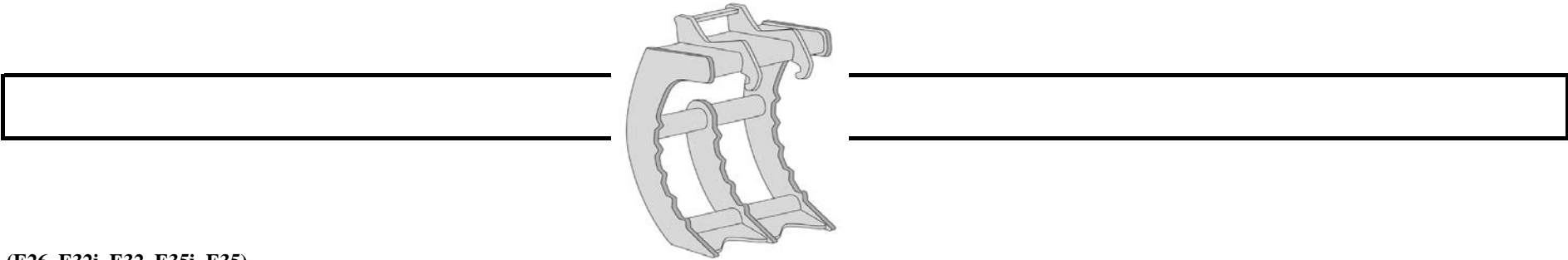
(E42, E45, E50, E55)					
7245468	Hoses for Std Arm (Incls Hoses and quick couplers) Must also order a Mounting Cap - And Case Drain Kit)	\$	208.34	24.0%	\$158.34
7245459	Hoses for Long Arm and Ext Arm (Incls Hoses and quick couplers) Must also order a Mounting Cap - And Case Drain Kit)	\$	233.75	24.0%	\$177.65
7238337	X-Change Mounting Cap (Must also order a Hose Kit and Case Drain Kit)	\$	802.88	24.0%	\$610.19
7246964	Pin-On Mounting Cap (Must also order a Hose Kit and Case Drain Kit)	\$	802.88	24.0%	\$610.19

Accessories for 40" Reinforced Flail Mower - 40FMR

	(Incls Hoses and quick couplers) Must also order a Mounting Cap - And Case Drain Kit)				
7238337	E63 - X-Change Mounting Cap (Must also order a Hose Kit and Case Drain Kit)	\$	802.88	24.0%	\$610.19

Part Number	Coupler, Pin Grabber Description	SLP in US\$	Discount Percent	Price
(E85)				
7171904	Coupler, Pin Grabber** (Compatible with attachment pin spacing of 11.5 inches) (E85 to E85 attachments)	\$	2,500.10	24.0% \$1,900.07
7171906	Coupler, Pin Grabber** Compatible with attachment pin spacing of 10.8 inches) (E85 to 442 attachments)	\$	2,601.73	24.0% \$1,977.31
**NOTE: If used on more than one attachment, must order the following for each additional attachment: 7004571 Pin - 2 ea 7007708 Bolt - 2 ea 7007801 Nut - 2 ea				

Part Number	Grapple, 3-Tine Description	SLP in US\$	Discount Percent	Price
-------------	-----------------------------	-------------	------------------	-------



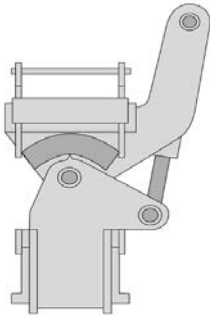
(E26, E32i, E32, E35i, E35)

7102977	3-Tine Grapple, CLASS III (X-Chg System Required) (Hydraulic Clamp is recommended when using 3-Tine Grapple)	\$	645.35	24.0%	\$490.47
---------	---	----	--------	-------	----------

(E42, E45, E50, E55, E60, E63)

6817104	3-Tine Grapple, CLASS IV (X-Chg System Required) (Hydraulic Clamp is recommended when using 3-Tine Grapple)	\$	691.08	24.0%	\$525.22
---------	--	----	--------	-------	----------

Part Number	Hydra-Tilt Description	SLP in US\$	Discount Percent	Price
-------------	------------------------	-------------	------------------	-------



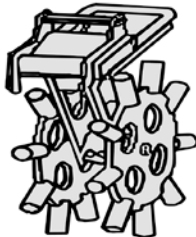
(E26, E32i, E32, E35i, E35, E42, E45, E50, E55, E63)

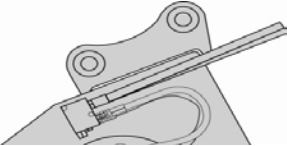
6728578	Hydra-Tilt (Must also order Hose Kit below) (Must also order Auxiliary Hydraulics p/n 7126596 if using with 329 excavator)	\$	2,063.09	24.0%	\$1,567.95
---------	--	----	----------	-------	------------

*The Extendible Arm must be pinned in the retracted position to use hydraulic attachments.

Part	Accessories	SLP in US\$	Discount	Price
------	-------------	-------------	----------	-------

Number	Description	Percent			
(E26, E32i, E32, E35i, E35, E63)					
6729174	Excavator Hose Kit (This hose kit must be used on above excavators when using a Hydra-Tilt) (Price includes \$90 for installation)	\$	198.18	24.0%	\$150.62
(E42, E45, E50)					
(E26, E32i, E32, E35i, E35, E42 E45 – All with Long Arm)					
6729175	Excavator Hose Kit (This hose kit must be used on above excavators when using a Hydra-Tilt) (Price includes \$90 for installation)	\$	198.18	24.0%	\$150.62
(E50 Long Arm, E55)					
6729176	Excavator Hose Kit (This hose kit must be used on above excavators when using a Hydra-Tilt) (Price includes \$90 for installation)	\$	177.85	24.0%	\$135.17

Part Number	Packer Wheel Description	SLP in US\$	Discount Percent	Price
<div><div></div><div></div><div>(E26, E32i, E32, E35i, E35, E42, E45, E50, E55, E60)</div></div>				
6806644	Packer Wheel	\$ 2,052.93	24.0%	\$1,560.22

Part Number	Plate Compactor Description	SLP in US\$	Discount Percent	Price
<div>  </div>				



(E32i, E32, E35i, E35, E42, E45, E50, E55, E63)

7211623	PCF34 Plate Compactor	\$	4,969.71	24.0%	\$3,776.98
(Must also order X-Change Mounting Cap and Hose Kit)					

(E55, E63, E85)

7210256	PCF64 Plate Compactor	\$	5,737.01	24.0%	\$4,360.13
(Must also order Mounting Cap and Hose Kit)					

Part	Accessories for Plate Compactor	SLP in US\$	Discount	Price
Number	Description		Percent	
	<u>Mounting Frame - PCF34</u>			

(E32i, E32, E35i, E35, E42, E45, E50, E55, E63)

7113656	X-Change Mounting Cap (Must also order hose kit)	\$	416.68	24.0%	\$316.68
---------	---	----	--------	-------	----------

Mounting Frame - PCF64

(E55, E63)

7113657	X-Change Mounting Cap (Must also order hose kit)	\$	416.68	24.0%	\$316.68
---------	---	----	--------	-------	----------

(E85)

7210254	Mounting Cap (Must also order hose kit)	\$	635.19	24.0%	\$482.74
---------	--	----	--------	-------	----------

Hose Kits for PCF34 and PCF64 Plate Compactors

(All Long Arm Excs and E55)

7217834	Hose Kit (Incls hoses and quick couplers)	\$	198.18	24.0%	\$150.62
---------	--	----	--------	-------	----------

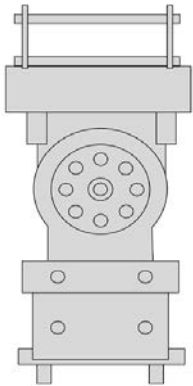
(All Std Arm Excs) (not including E63, E85)

7217835	Hose Kit (Incls hoses and quick couplers)	\$	188.02	24.0%	\$142.89
---------	--	----	--------	-------	----------

(E63, E85)

7217836	Hose Kit (Incls hoses and quick couplers)	\$	279.48	24.0%	\$212.41
---------	--	----	--------	-------	----------

Part Number	Power Tilt Description	SLP in US\$	Discount Percent	Price
-------------	------------------------	-------------	------------------	-------



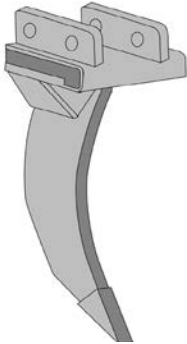
(E26, E32i, E32, E35i, E35)

6719347	PTX3 (Includes hoses & couplers) * The Extendable Arm must be pinned in the retracted position to use hydraulic attachments.	\$ 4,751.20	24.0%	\$3,610.91
---------	--	-------------	-------	------------

(E42, E45, E50, E55, E63)

6718077	PTX4 (Includes hoses & couplers)	\$ 6,301.06	24.0%	\$4,788.81
---------	--	-------------	-------	------------

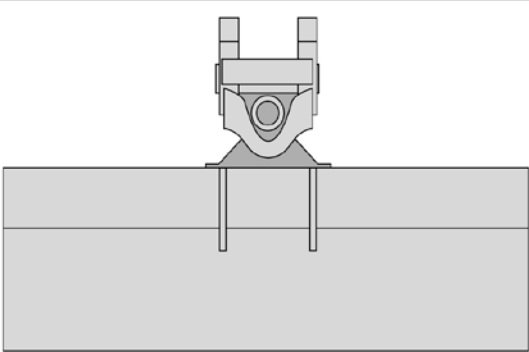
Part Number	Ripper Description	SLP in US\$	Discount Percent	Price
-------------	--------------------	-------------	------------------	-------



If using a pin grabber coupler order pin kits from below:

7329828	35 MM PIN KIT	Parts
7328361	45 MM PIN KIT	Parts
7328360	55 MM PIN KIT	Parts

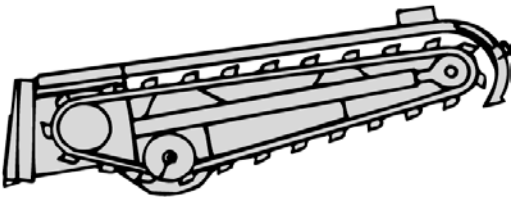
Part Number	Tilt Bucket Description	SLP in US\$	Discount Percent	Price
-------------	-------------------------	-------------	------------------	-------



Pin-On Bucket

(E85)				
7171901	48" Tilting Grade Bucket, No Teeth	\$ 7,607.01	24.0%	\$5,781.32

Part Number	Trencher Description	SLP in US\$	Discount Percent	Price
-------------	----------------------	-------------	------------------	-------



(E32, E35, E42, E45, E50, E55)				
M7012	MX112 Trencher	\$ 3,592.62	24.0%	\$2,730.39

(Includes X-Change mounting frame, hoses, couplers, 2' depth, no sideshift)
(Can only order one chain option per trencher model)
* The Extendable Arm must be pinned in the retracted position to use hydraulic attachments.

MX112 Chain Configuration Options (Factory Installed)

	<i>Chains are 1.654" Double Standard (DS) Anti-Back Flex (ABF)</i>				
M7012-R01-C02	2' x 4" cup teeth, Single Standard pattern	\$	391.28	24.0%	\$297.37
M7012-R01-C01	2' x 4" Cup Teeth, Double Standard Pattern	\$	492.91	24.0%	\$374.61
M7012-R01-C03	2' x 4" cup & carbide teeth, Double Standard pattern	\$	960.40	24.0%	\$729.91

--	--	--	--	--	--

--	--	--	--	--	--